

ME 1403 Engineering Practice & Graphics
Spring 2018

Lecture 4

Chapter-4

Instructor:

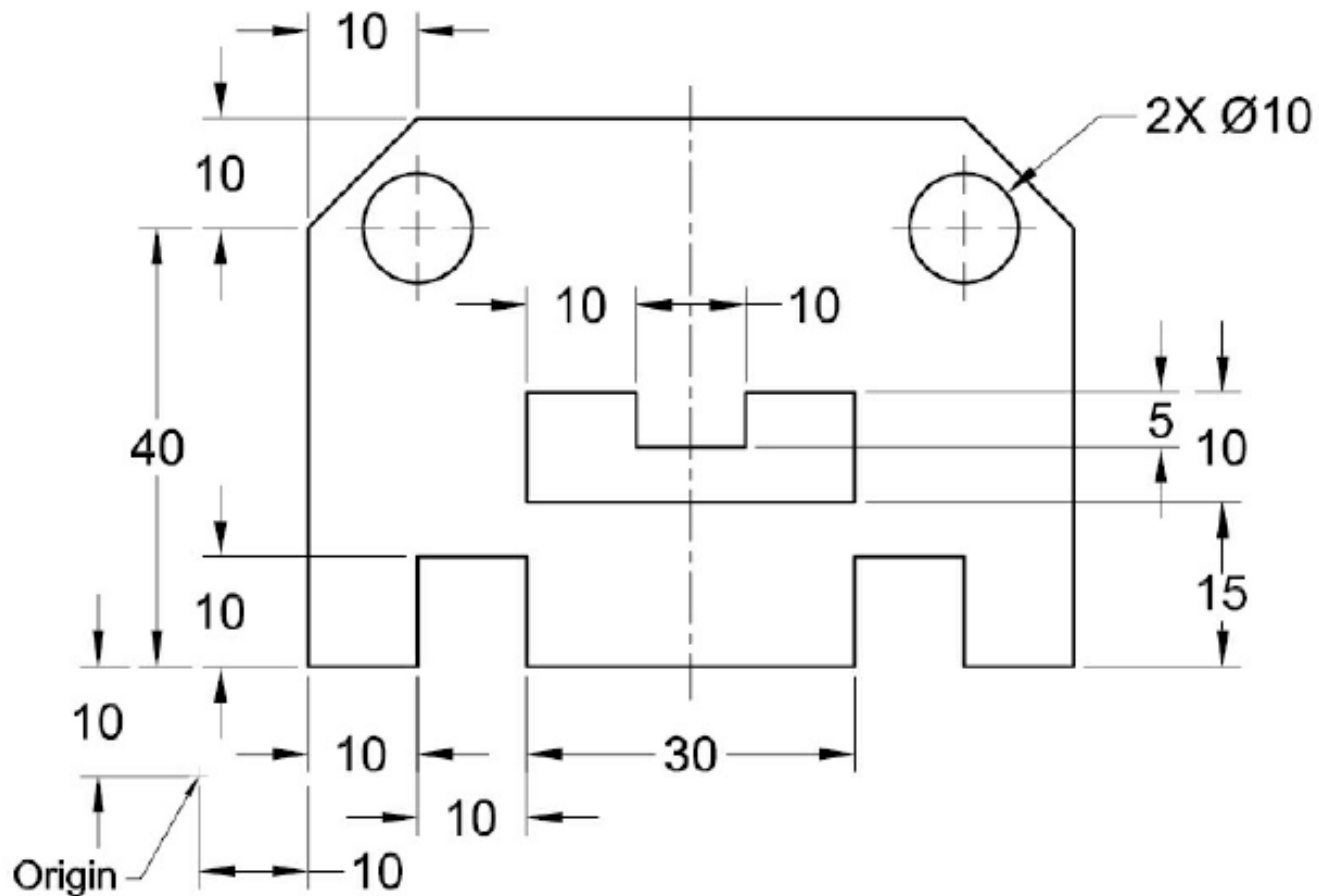
Syed Hasib Akhter Faruqui

[Email: shafnehal@gmail.com](mailto:shafnehal@gmail.com)

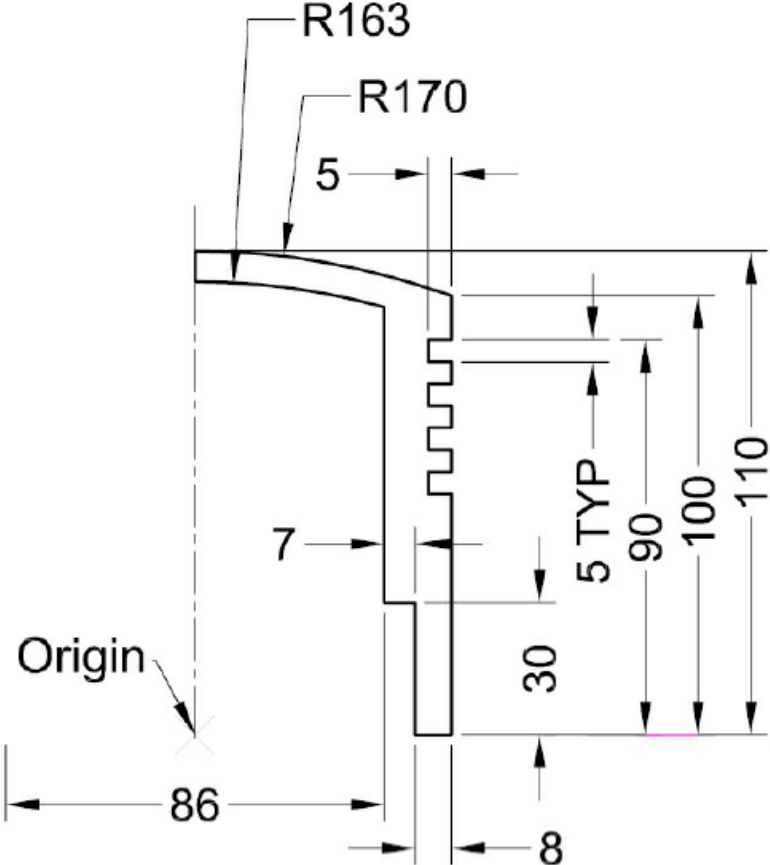
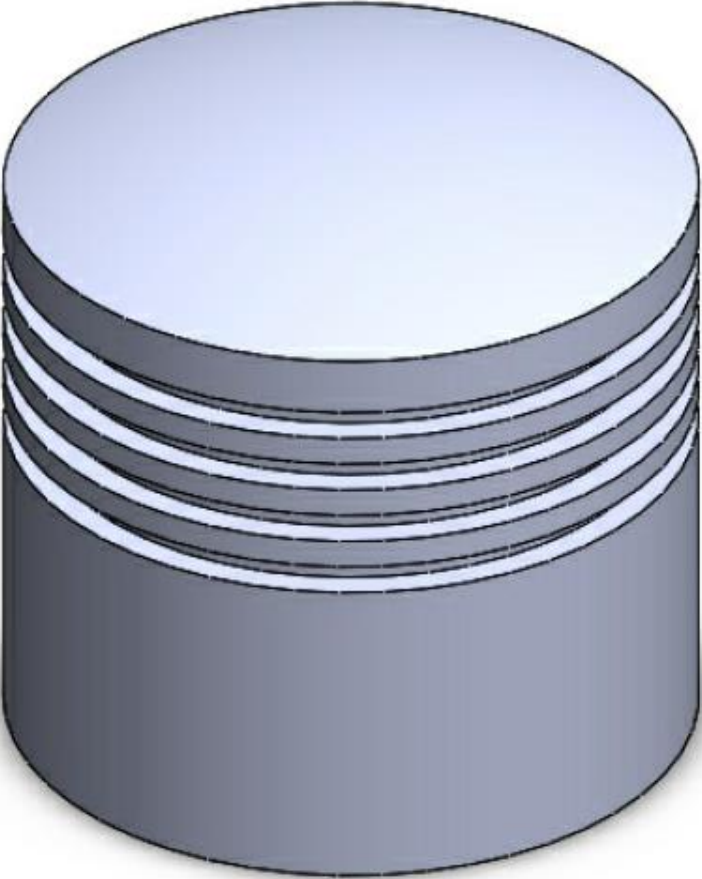
Outline

- Tools / Methods
 - Add Relation
 - Dimension
 - Ladder
 - Aligned
 - Angular
 - Diameter/Radius
 - Tolerance
- Discussion
 - Design Intent
 - Fully Defined /Over define /Under Defined
- Practice
 - Tutorial-1 (Will be Graded)
 - Tutorial-2 (Will be Graded)
- Homework
 - Exercise-1 (Will be Graded)

Tutorial 1 (Will be Graded)



Tutorial 2 (Will be Graded)



Submission Rules

- Homework's are due **at the Monday 11.59 P.M.** of the following week (*More Discussion on next class*).
- Quiz's will be taken (*More Discussion on later classes*).
- Submit everything via **Blackboard**.
- Copying your assignments are **prohibited**. If you do so, you and the individual you copied from will receive a **grade zero**, plus both of you will be referred for actions as described in the university's policy for academic dishonesty. ([Read Section 203 of the Student Code of Conduct 2013-2013 UTSA Information Bulletin.](#))