

ME 1403 Engineering Practice & Graphics  
Spring 2018

# Lecture 17-B

Chapter-14

Instructor:

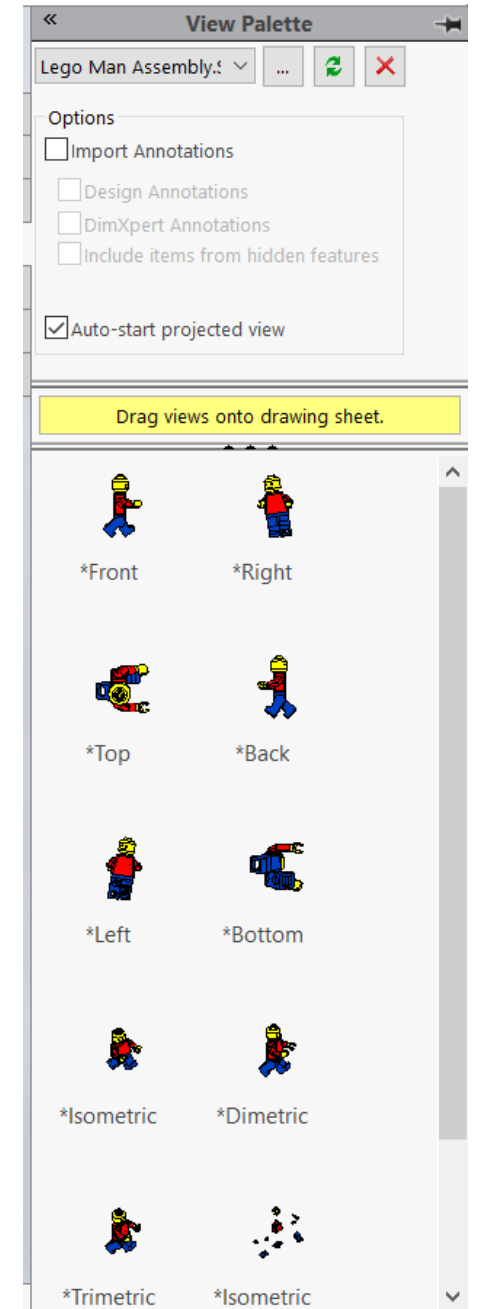
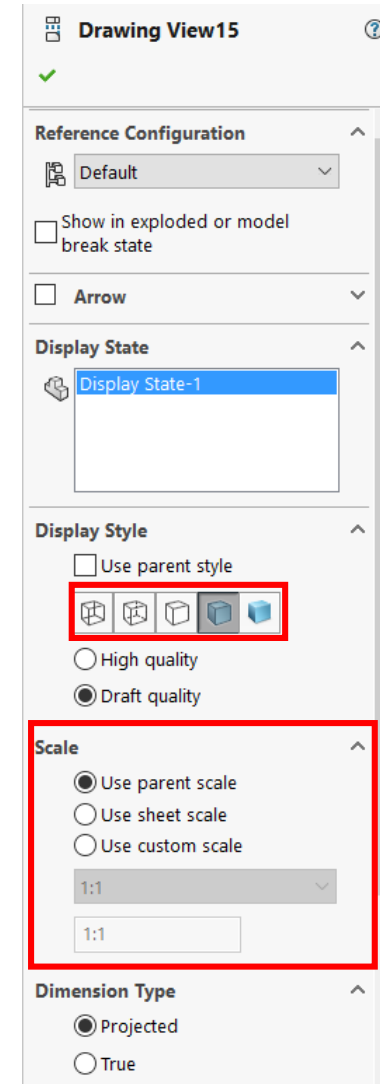
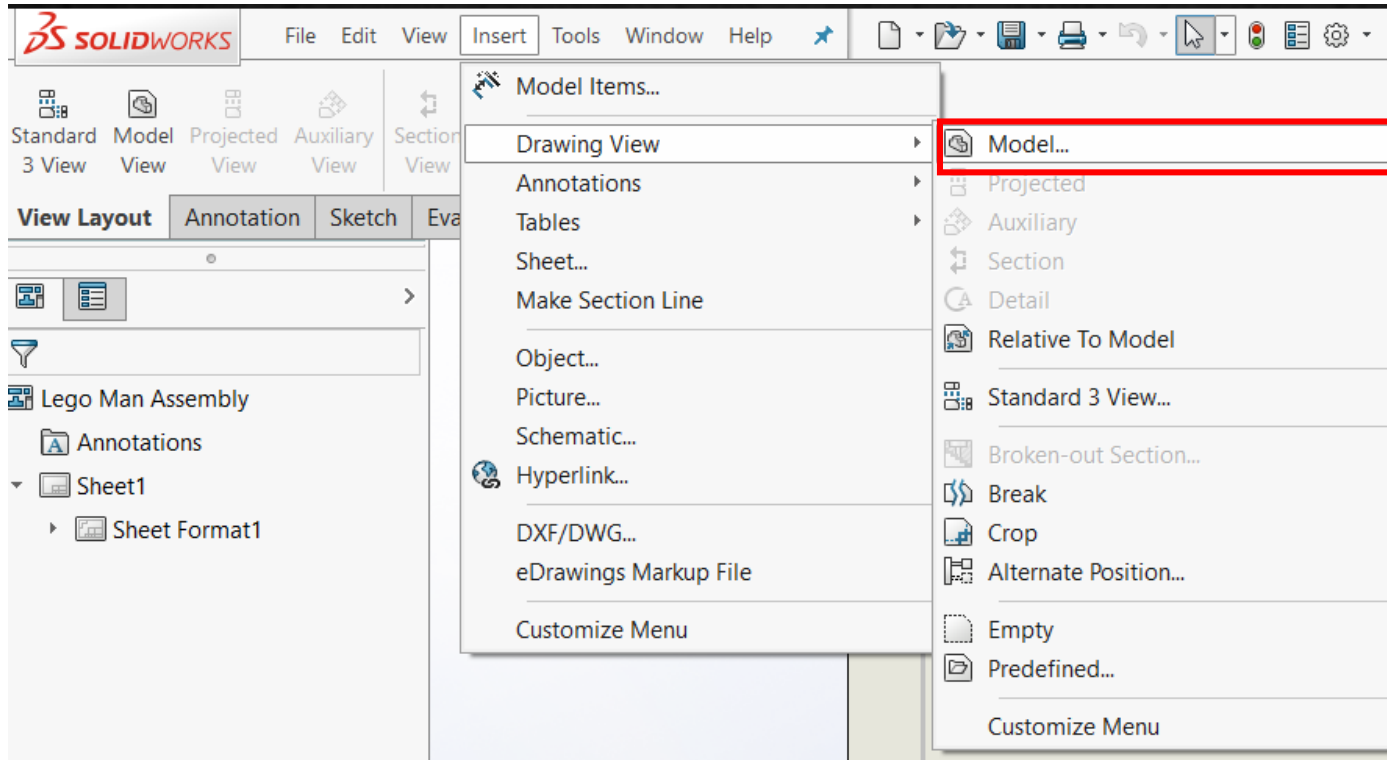
Syed Hasib Akhter Faruqui

[Email: shafnehal@gmail.com](mailto:shafnehal@gmail.com)

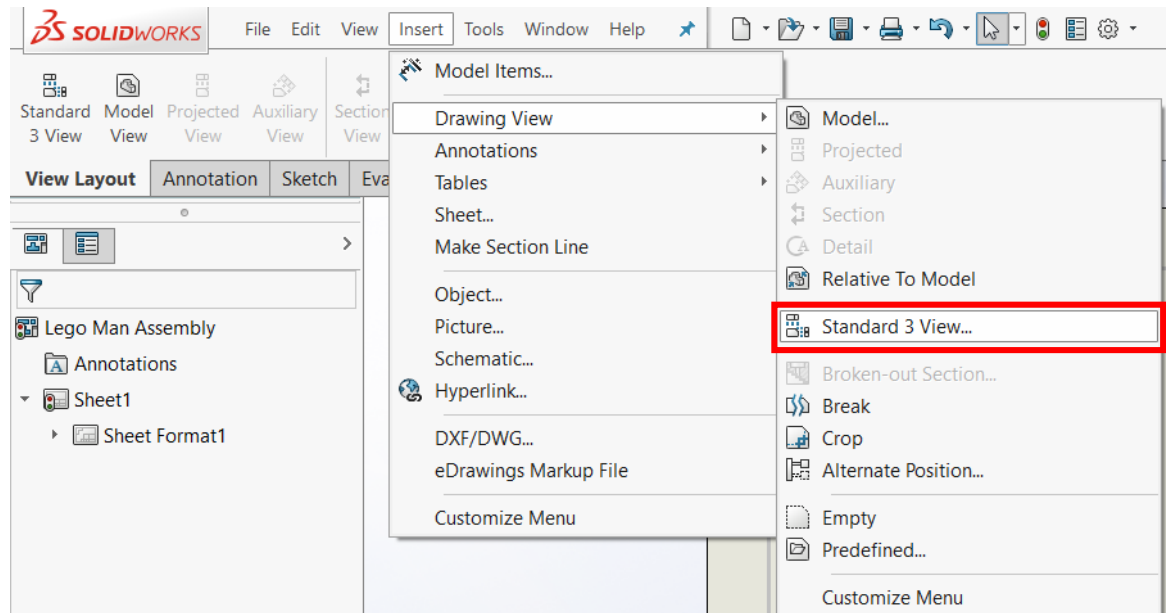
# Outline

- Topics
  - Generating three Standard View
  - Pre-defined view tool
  - Projected Views
  - Section Views
  - Auxiliary Views
  - Detail View
  - Broken Views
- Today's Task
  - Practice 1
  - Practice 2

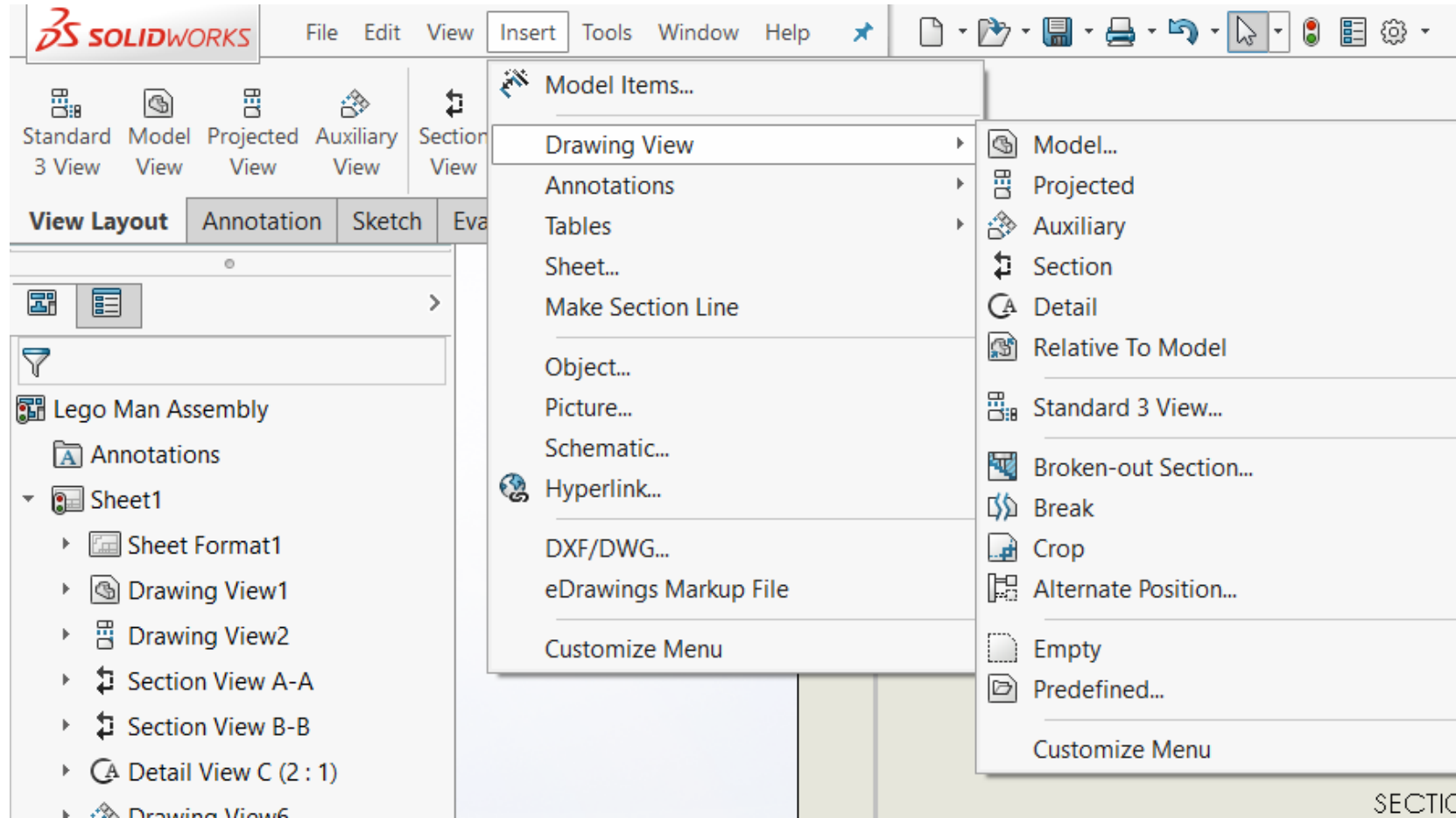
# Generating Three Standard View



# Generating Three Standard View



# Other Views



# Practice 1

1) Open the piston head you have created in last Tutorial

2) Create the Following

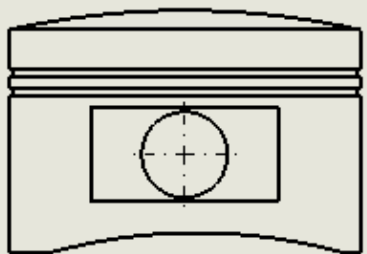
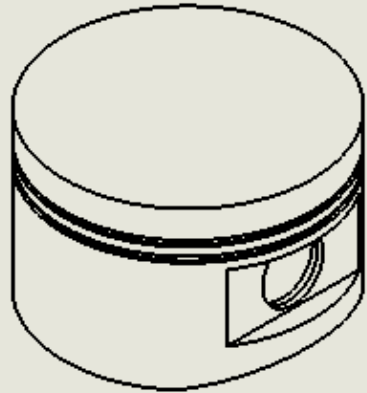
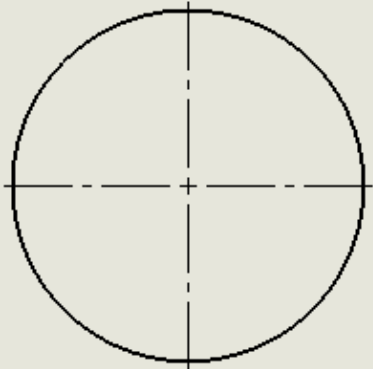
a) Front View

b) Right Side View

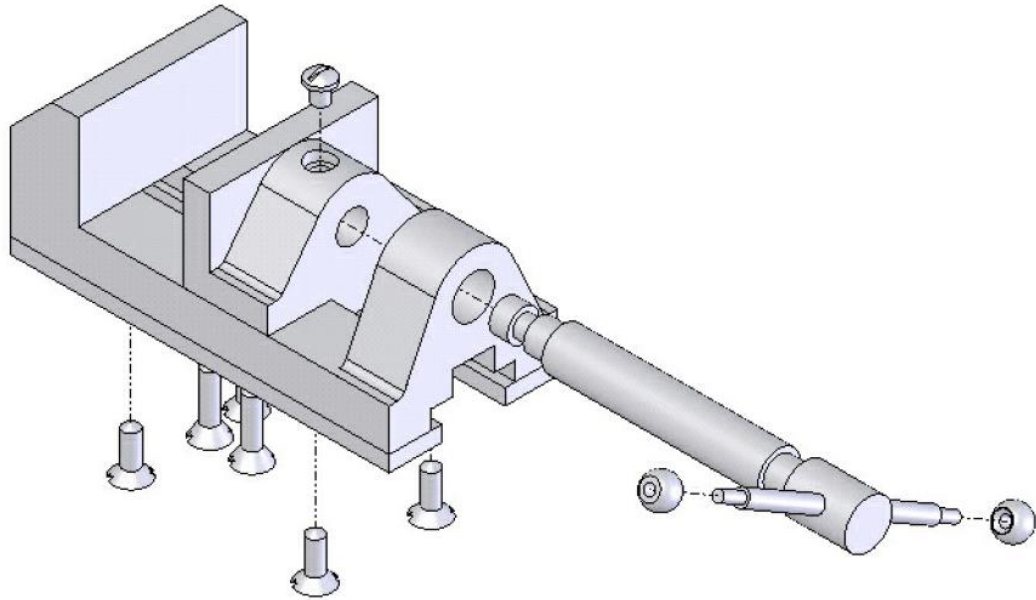
c) Top View

d) Isometric View

e) Create a section view on the isometric view (Any location)



# Practice 2



- 1) Open the Vise bench you have created Separately
- 2) Create Exploded Parts in Assembly
- 3) Create the Drawing from Assembly
- 4) Create the Following
  - a) Front View
  - b) Right Side View
  - c) Top View
  - d) Isometric View
  - e) Section View
  - f) Detail View