

ME 1403 Engineering Practice & Graphics

Fall - 2017

# Lecture 20-B

Chapter-14

Instructor:

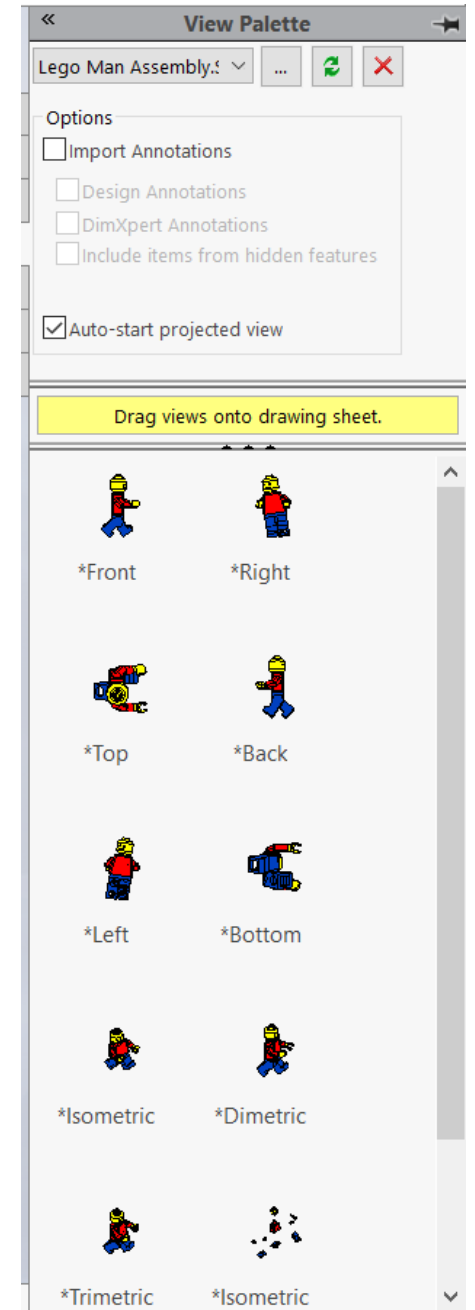
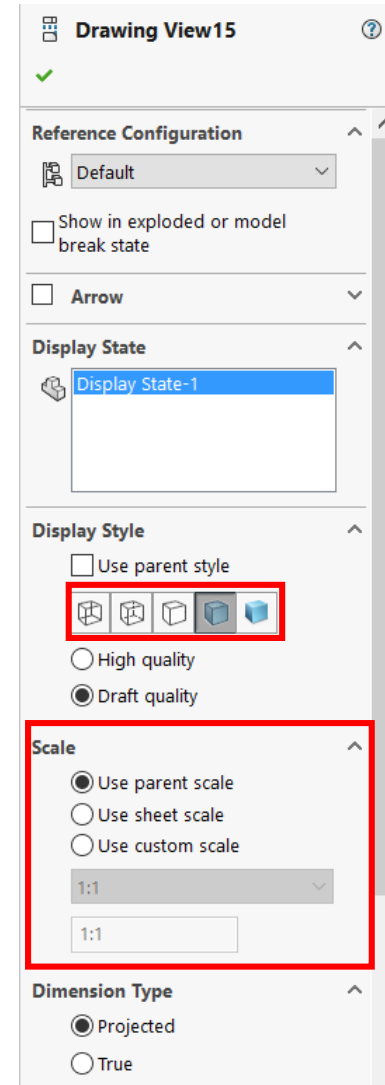
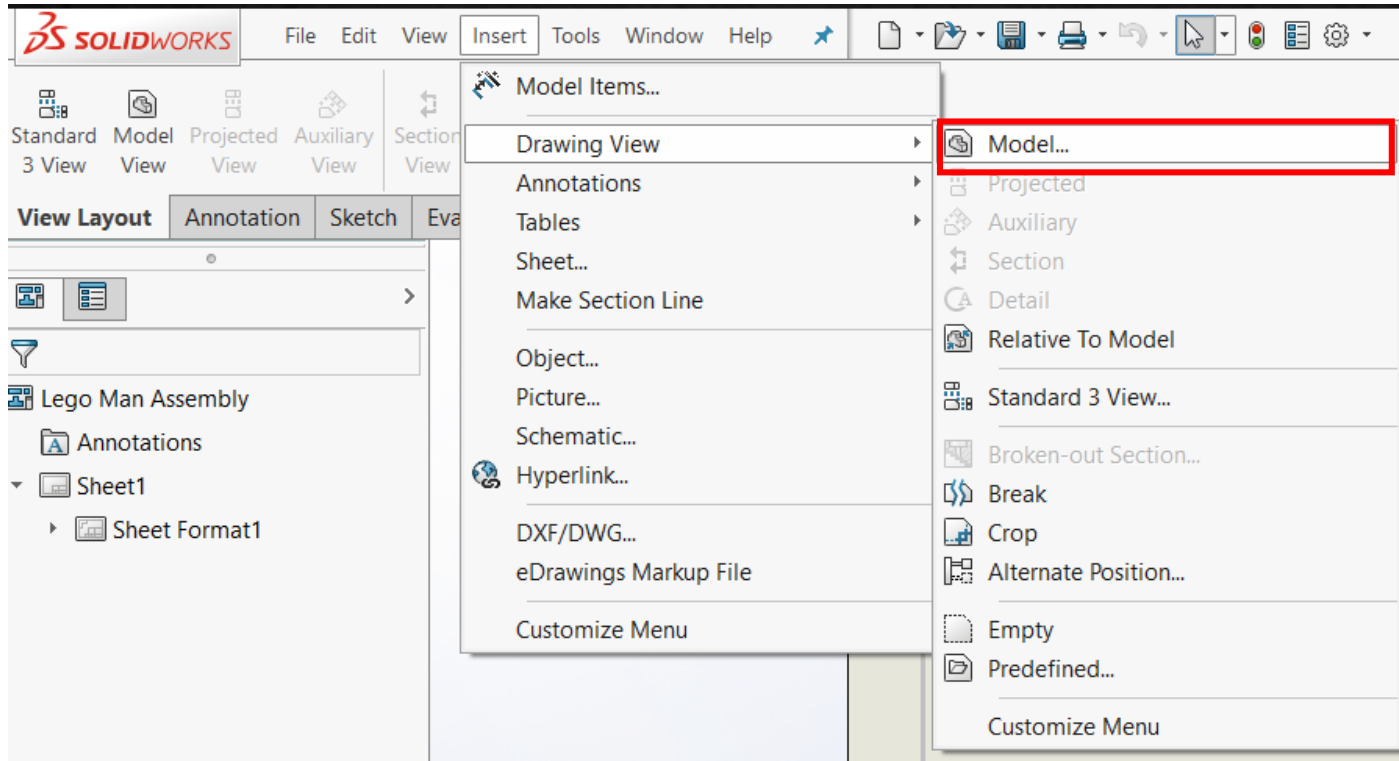
Syed Hasib Akhter Faruqui

[Email: shafnehal@gmail.com](mailto:shafnehal@gmail.com)

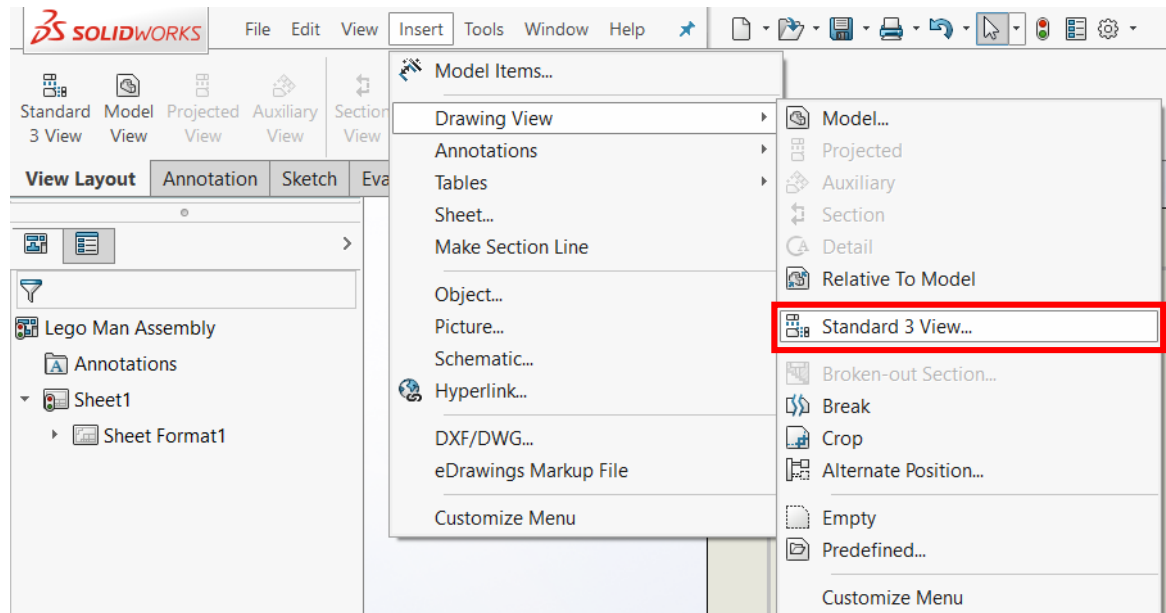
# Outline

- Topics
  - Generating three Standard View
  - Pre-defined view tool
  - Projected Views
  - Section Views
  - Auxiliary Views
  - Detail View
  - Broken Views
- Today's Task (Will be Graded)
  - Tutorial 1
  - Tutorial 2
  - Exercise 1

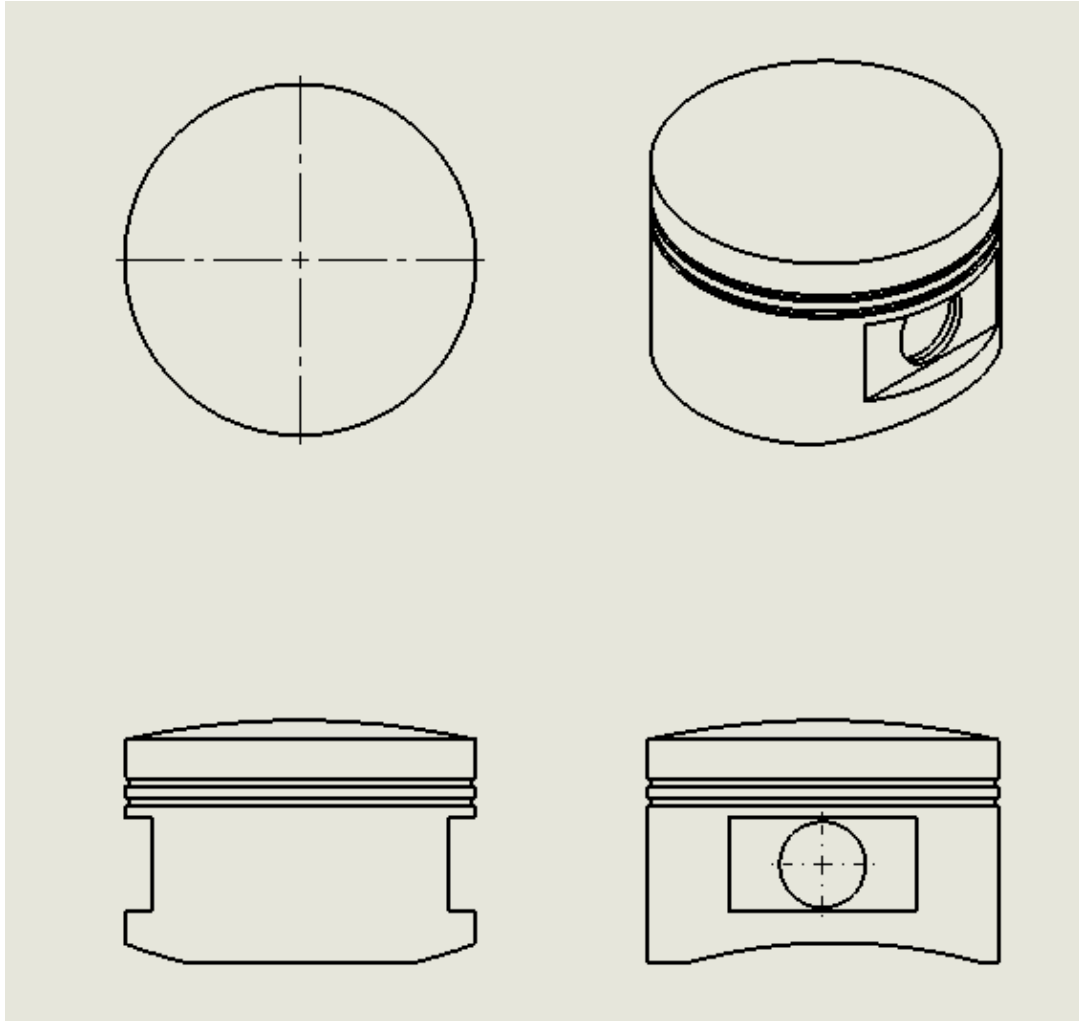
# Generating Three Standard View



# Generating Three Standard View







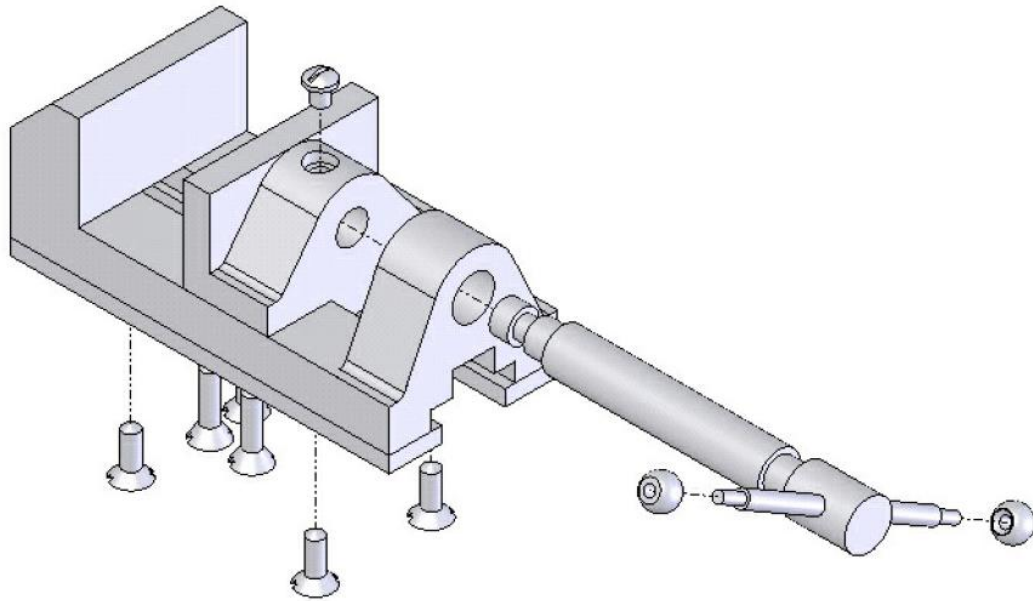
# Tutorial 1

(Will be Graded)


- 1) Open the piston head you have created in last Tutorial
- 2) Create the Following
  - a) Front View
  - b) Right Side View
  - c) Top View
  - d) Isometric View
  - e) Aligned Section View

# Tutorial 2

(Will be Graded)



- 1) Open the Vise bench you have created Separately
- 2) Create Exploded Parts in Assembly
- 3) Create the Drawing from Assembly
- 4) Create the Following
  - a) Front View
  - b) Right Side View
  - c) Top View
  - d) Isometric View
  - e) Section View
  - f) Aligned Section View



# Exercise 1

(Bonus Grades for  
Thanks Giving)

Enjoy your Holidays  
with family and  
friends!



# Submission Rules

- Homework's are due **at the beginning of the first lab** of the following week.
- Quiz's will be taken.
- Submit everything via **Blackboard**.
- Copying your assignments are **prohibited**. If you do so, you and the individual you copied from will receive a **grade zero**, plus both of you will be referred for actions as described in the university's policy for academic dishonesty. ([Read Section 203 of the Student Code of Conduct 2013-2013 UTSA Information Bulletin](#)).

# Submission Rules

- Any submission after deadline **will not be accepted** and thus will receive a **grade of zero**.
- Grading Criteria for Late Submission:
  - Submission on Time : 100%
  - Submission a week late : 75%
  - Submission two week late : 0%
- Naming Convention for your submission files:
  - *(your myUTSA id)\_(Number/Name of the HomeWork)*
- For Example if your myUTSA id is “**abc123**” and You are submitting “**HW1**”. Then your submission file name should be “**abc123\_HW1**”.