

ME 1403 Engineering Practice & Graphics

# Lecture 6

Chapter-4

Instructor:

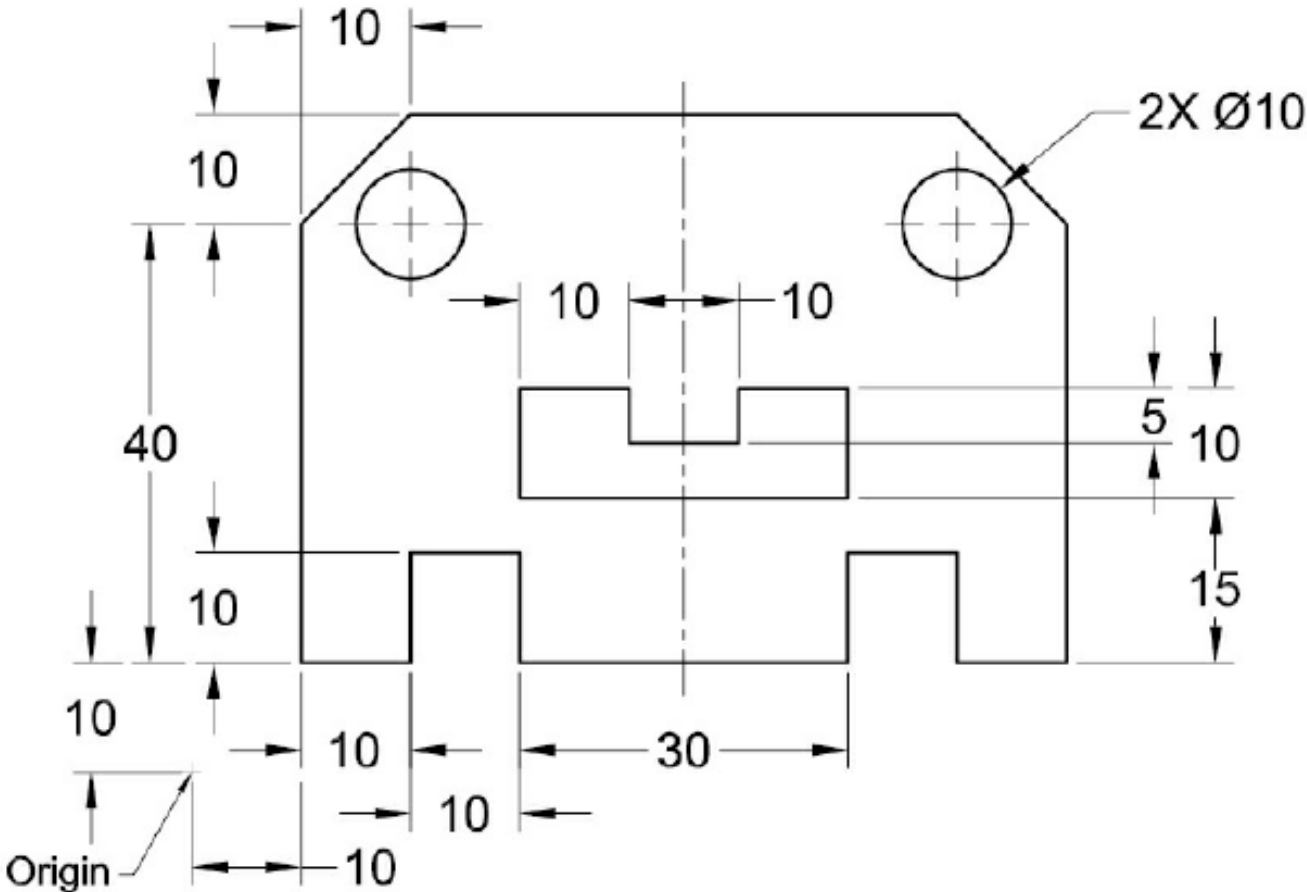
Syed Hasib Akhter Faruqui

[Email: shafnehal@gmail.com](mailto:shafnehal@gmail.com)

# Outline

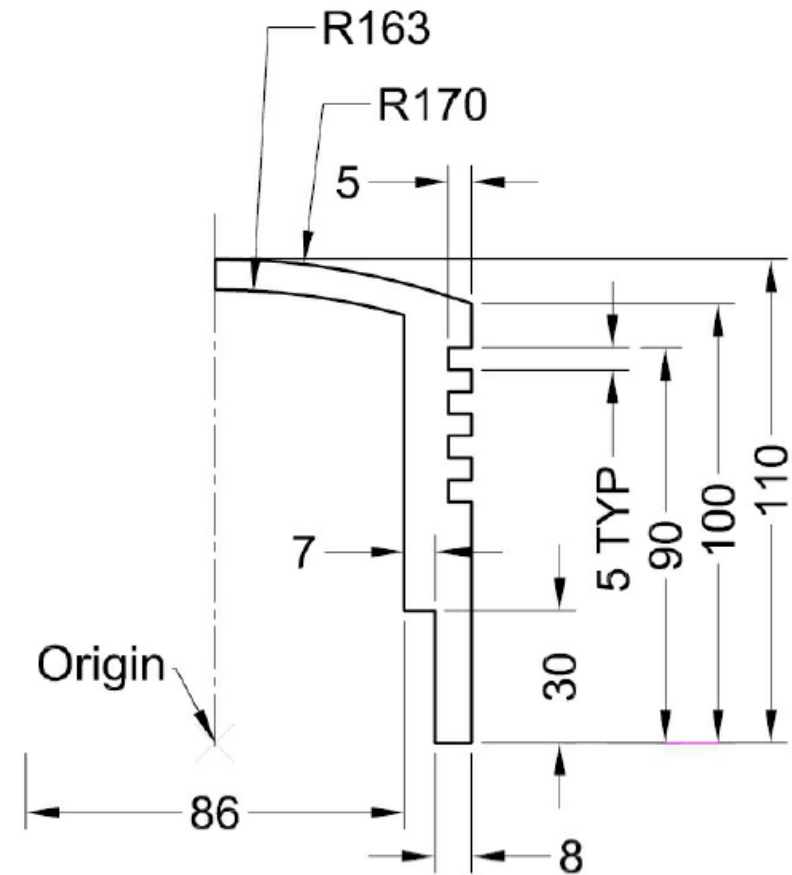
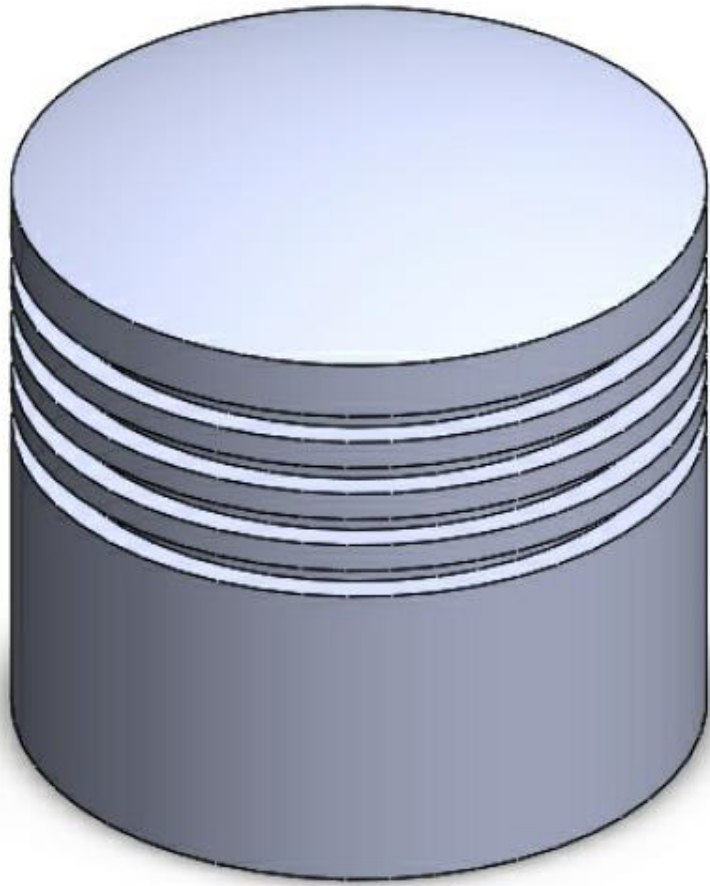
- Tools / Methods
  - Add Relation
  - Dimension
    - Ladder
    - Aligned
    - Angular
    - Diameter/Radius
  - Tolerance
- Discussion
  - Design Intent
  - Fully Defined /Over define /Under Defined
- Practice
  - Tutorial-1 (Will be Graded)
  - Tutorial-2 (Will be Graded)
- Homework
  - Exercise-1 (Will be Graded)

# Tutorial 1 (Will be Graded)

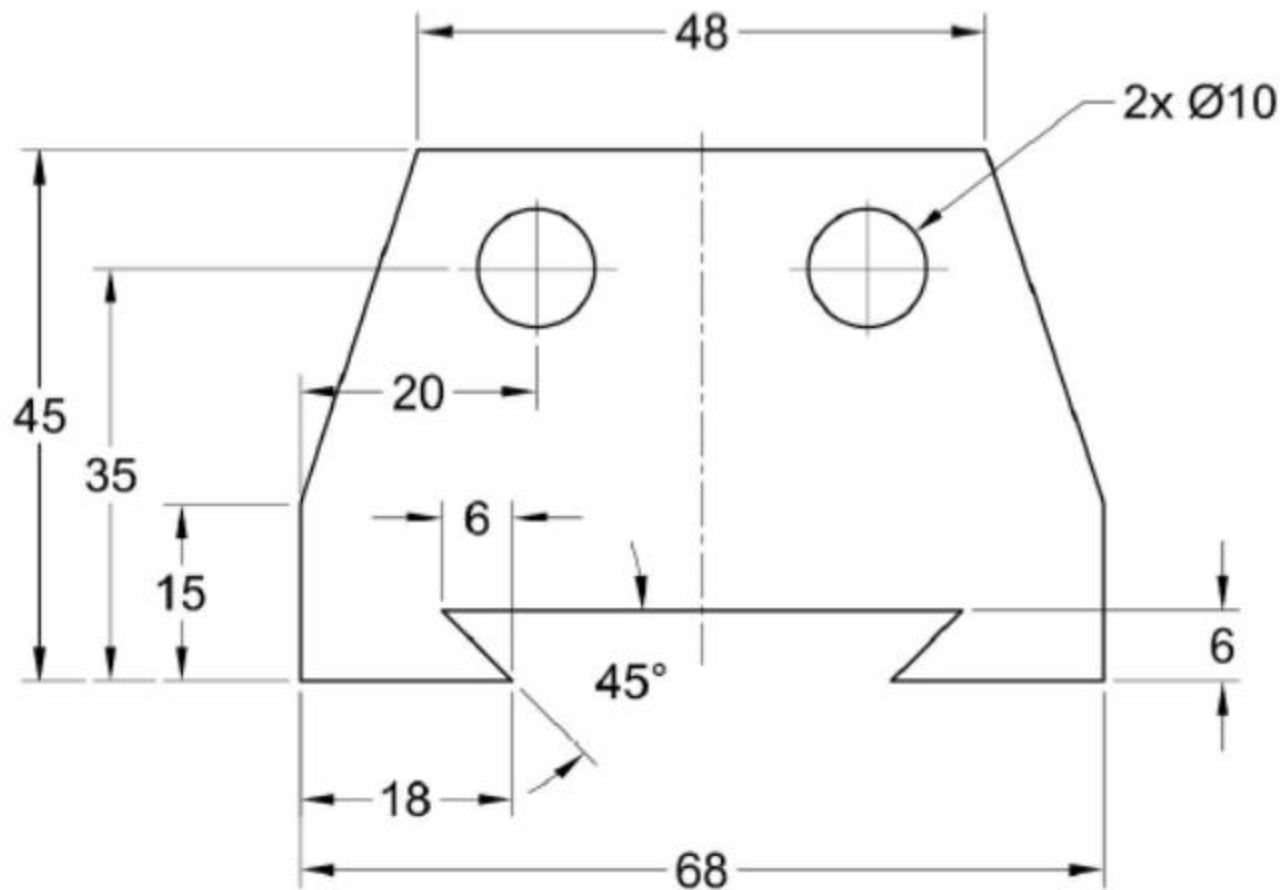


**File Name:** Your Section\_Your ID\_Ch4Tut1

# Tutorial 2 (Will be Graded)



# Exercise 1 (Will be Graded)



# Submission Rules

- Homework's are due **at the Sunday 11.59 P.M.** of the following week (*More Discussion on next class*).
- Quiz's will be taken (*More Discussion on later classes*).
- Submit everything via **Blackboard**.
- Copying your assignments are **prohibited**. If you do so, you and the individual you copied from will receive a **grade zero**, plus both of you will be referred for actions as described in the university's policy for academic dishonesty. ([Read Section 203 of the Student Code of Conduct 2013-2013 UTSA Information Bulletin.](#))